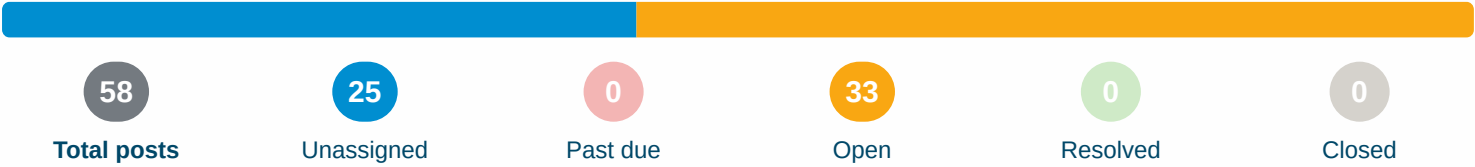




Food Lion #2250 Electrical Survey with Arc Flash Study Revised with Engineering Comments, 10-15-19 7/8/2019 - 10/15/2019



Posts

 [Open](#)

Post 3 - Generator



Dave Beretsky - Crescent Construction Services

8/16/2019, 2:00 PM EDT

To: Assignees, Crescent Construction Services

Feeds panel EM via transfer switch.

Location  *Mechanical Room*

Assigned To 



Electrical Engineering

No due date

[Open](#)



Electrical Contractor

No due date

[Open](#)

All Media  2 photos




Updates



Dave Beretsky - Crescent Construction Services

10/15/2019, 9:55 AM EDT

 The generator services the front POS equipment and the emergency lighting. Since a new UPS and OW/CR panel will be installed and the sales lighting will be replaced. We recommend removing this unit and providing the appropriate emergency lighting. Per Food Lion Engineering Department.



Added Electrical Contractor as an assignee



Added Electrical Engineering as an assignee

 **Unassigned**

Post 25 - Arc Flash Study with Equipment Duty Report - (See attachment)



Dave Beretsky - Crescent Construction Services

8/16/2019, 2:03 PM EDT

To: Crescent Construction Services

Location  *Entire Store*

Attachments  [FL2250_AFS.pdf \(148 kB\)](#)

 **Open****Post 27 - Mismatched Feeders****Dave Beretsky - Crescent Construction Services**

8/16/2019, 2:03 PM EDT

To: Assignees, Crescent Construction Services

The following feeders are not sized to match main breaker: B breaker is 175 amps, conductors rated for 150 amps. See Arc Flash Study for details.

Location  **Entire Store**Assigned To  **Electrical Engineering**

No due date

OpenAll Media  **1 photo**

 **Open**

Post 79 - Full Infrared Scan Required As Part Of Final Inspection.



Brad Williams - Crescent Construction Services

8/16/2019, 2:03 PM EDT

To: Assignees, Crescent Construction Services

Only minimal lighting was turned on to complete the survey.

Assigned To 



Crescent Construction Services

No due date

Open

 **Open****Post 30 - MDP-3, Panel R Bolted Pressure Switch****Rob Stubbs** - Crescent Construction Services

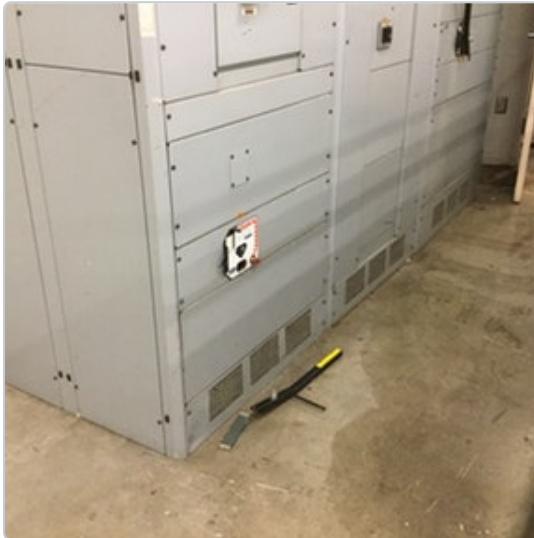
8/16/2019, 2:03 PM EDT

To: Assignees, Crescent Construction Services

Shaft on open bolted pressure switch sheared off. Replace.

Location  **Dock**Assigned To  **Electrical Contractor**

No due date

OpenAll Media  **5 photos**





Open

Post 53 - Hot Termination - Contactors In Branch Panel Enclosure**Rob Stubbs** - Crescent Construction Services

8/16/2019, 2:02 PM EDT

To: Assignees, Crescent Construction Services

Bottom row, left contactor. Load side of contactor labeled T3 termination, 10 AWG, no load obtained, room temp 87F. IR Image: 5391. Screw appears tight. Replace all damaged components/conductor.

Location **Mechanical Room**

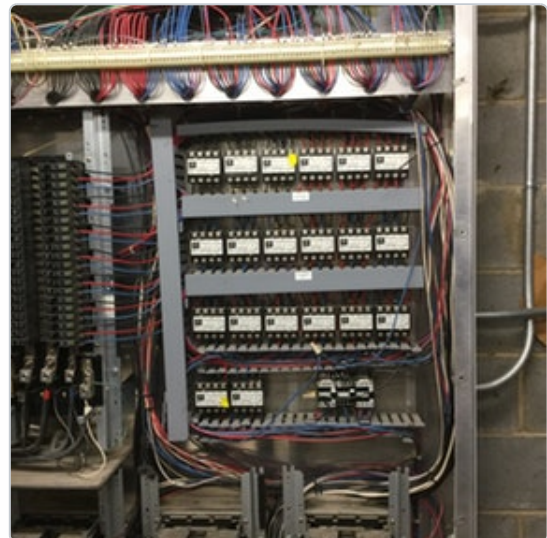
Assigned To

**Electrical Contractor**

No due date

Open

All Media 4 photos





Open

Post 52 - Hot Termination - Contactors In Branch Panel Enclosure**Rob Stubbs** - Crescent Construction Services

8/16/2019, 2:02 PM EDT

To: Assignees, Crescent Construction Services

Top row, 3rd contactor from left. Line side of contactor labeled L3 termination, 10 AWG, no load obtained, room temp 87F. IR Image: 5390. Conductor shows signs of excessive heat. Replace contactor and all damaged conductor.

Location **Mechanical Room**

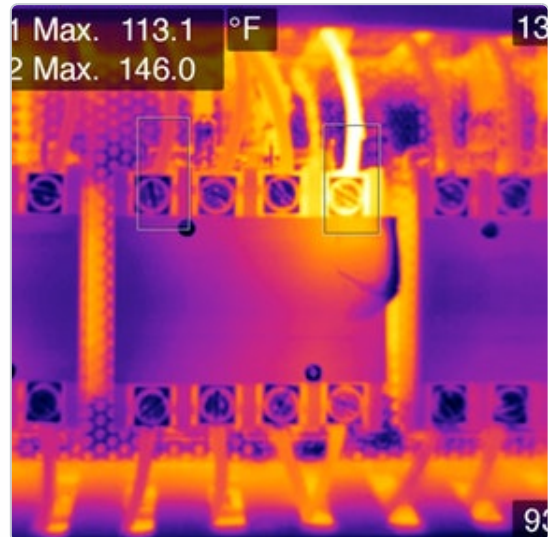
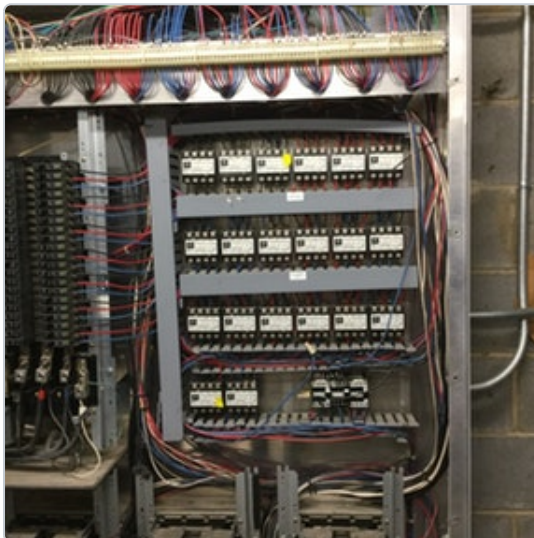
Assigned To

**Electrical Contractor**

No due date

Open

All Media 4 photos





Open

Post 51 - Code Violation - Panel A**Rob Stubbs** - Crescent Construction Services

8/16/2019, 2:02 PM EDT

To: Assignees, Crescent Construction Services

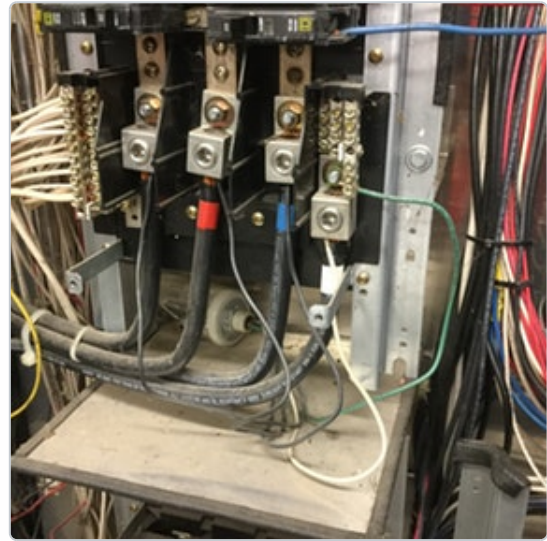
Green conductor terminated on right neutral bar for lightning arrester. Repair, EGC's to be terminated to can.

Location  *Mechanical Room*Assigned To 

Electrical Contractor

No due date

Open

All Media  2 photos



Open

Post 31 - Circuit Tripped - PL # 5, 7**Rob Stubbs** - Crescent Construction Services

8/16/2019, 2:02 PM EDT

To: Assignees, Crescent Construction Services

30 amp 2-pole breaker, 10, 10 AWG, labeled "Pole Lighting". Repair.

Location **Office**

Assigned To

**Electrical Contractor**

No due date

Open

All Media 1 photo



**Open****Post 55 - RTU-1****Rob Stubbs - Crescent Construction Services**

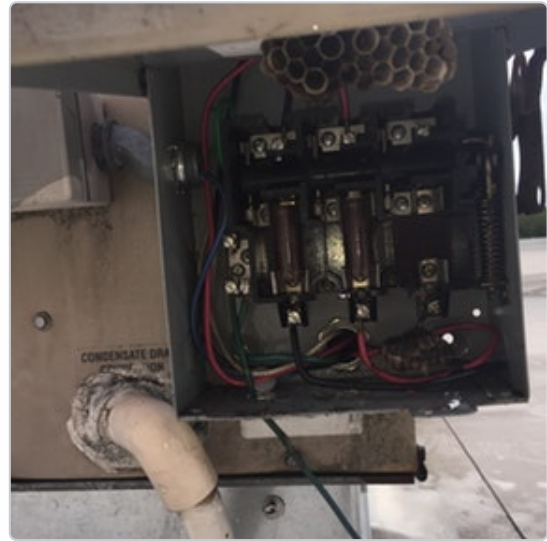
8/16/2019, 2:02 PM EDT

To: Assignees, Crescent Construction Services

Bussman solid link used in place of fuses. Current disconnect is Siemens 30 amps. Replace with non fused disconnect sized per equipment requirements.

Location  **Roof**Assigned To **Electrical Contractor**

No due date

OpenAll Media  **2 photos**

**Post 20 - Install Egress Lighting****Dave Beretsky - Crescent Construction Services**

8/16/2019, 2:02 PM EDT

To: Assignees, Crescent Construction Services

Install fixtures on the following doors: Right rear, rear mezzanine, DSD, left side, front entrances. Work with owner on fixture selection.

Location  **Entire Store**Assigned To 

 Electrical Engineering	No due date	Open
 Owner	No due date	Open
 Electrical Contractor	No due date	Open

All Media  **5 photos**



[Open](#)**Post 48 - MDP-1, MDP-2, MDP-3 - Label enclosures with phenolic tags****Rob Stubbs** - Crescent Construction Services

8/16/2019, 2:02 PM EDT

To: Assignees, Crescent Construction Services

All branch circuit panel boards, safety disconnects, electrical distribution equipment, main breakers, and main service disconnects shall be labeled with phenolic tags, black on white, 1.5" tall. Distribution sections shall be labeled according to arc flash labels.

Location **Dock**

Assigned To

**Electrical Contractor**

No due date

[Open](#)All Media **1 photo**

**Open****Post 56 - MDP-2, MDP-3, DP, R-1 - Label all breakers and fuse enclosures with phenolic tags****Rob Stubbs - Crescent Construction Services**

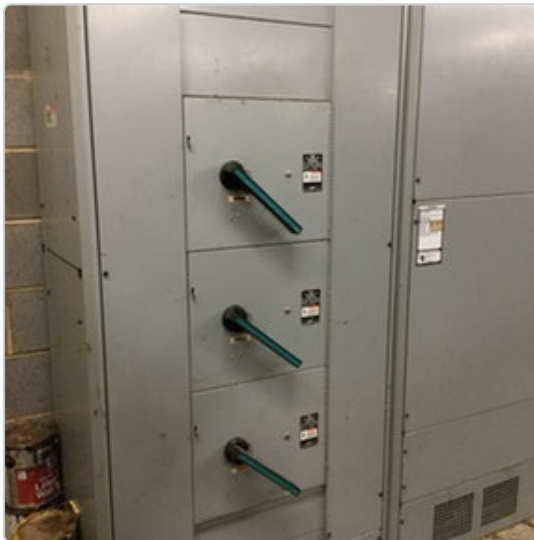
8/16/2019, 2:02 PM EDT

To: Assignees, Crescent Construction Services

All branch circuit panel boards, safety disconnects, electrical distribution equipment, main breakers, and main service disconnects shall be labeled with phenolic tags, black on white, 1.5" tall. Distribution sections shall be labeled according to arc flash labels.

Location  **Entire Store**Assigned To **Electrical Contractor**

No due date

OpenAll Media  **4 photos**

**Open**

Post 57 - DP, R-1, R-2, Panelboards - Label all with phenolic tags. Vinyl labels will not be accepted.

**Rob Stubbs - Crescent Construction Services**

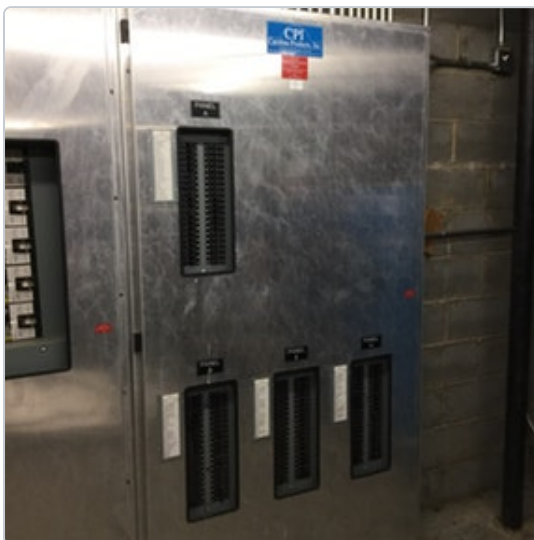
8/16/2019, 2:02 PM EDT

To: Assignees, Crescent Construction Services

All branch circuit panel boards, safety disconnects, electrical distribution equipment, main breakers, and main service disconnects shall be labeled with phenolic tags, black on white, 1.5" tall. Distribution sections shall be labeled according to arc flash labels.

Location  **Mechanical Room**Assigned To **Electrical Contractor**

No due date

OpenAll Media  4 photos

[Open](#)

Post 12 - Existing Neutrals, Case Lighting & Fans

**Dave Beretsky** - Crescent Construction Services

8/16/2019, 2:02 PM EDT

To: Assignees, Crescent Construction Services

Unable to determine from existing refrigeration conduits in mechanical room if lights and fans are sharing neutrals. This only applies to new and relocated case work - lights and fans are to have dedicated neutrals.

Location  *Mechanical Room*Assigned To **Electrical Engineering**

No due date

[Open](#)All Media  1 photo



Open

Post 17 - Refrigeration Circuit Sizing**Dave Beretsky - Crescent Construction Services**

8/16/2019, 2:02 PM EDT

To: Assignees, Crescent Construction Services

MT1 Rack: 350 amp fuses in 400 amp section, 2 sets 4/0 AWG Cu.

MT2 Rack: 350 amp fuses in 400 amp section, 500 MCM Cu.

LT Rack: 350 amp fuses in 400 amp section, 2 sets 250 MCM Cu.

MT1 Cond Main: 50 amp breaker, 8 AWG Cu. Breaker located in Rack.

MT2 Cond Main: 40 amp breaker, 8 AWG Cu. Breaker located in Rack.

LT Cond Main: 40 amp breaker, 8 AWG Cu. Breaker located in Rack.

AC-1: 250 amp breaker, 4/0 AWG Cu.

AC-2: 250 amp breaker, 4/0 AWG Cu.

Engineer to size main breakers / conductors per MOPD / MCA requirements in revised refrigeration summary. See Disconnect Inventory for relative data.

Location Entire Store

Assigned To



Electrical Engineering

No due date

Open

All Media 11 photos





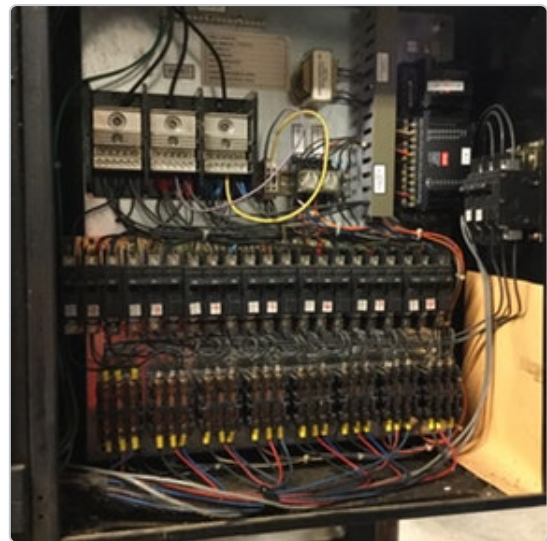


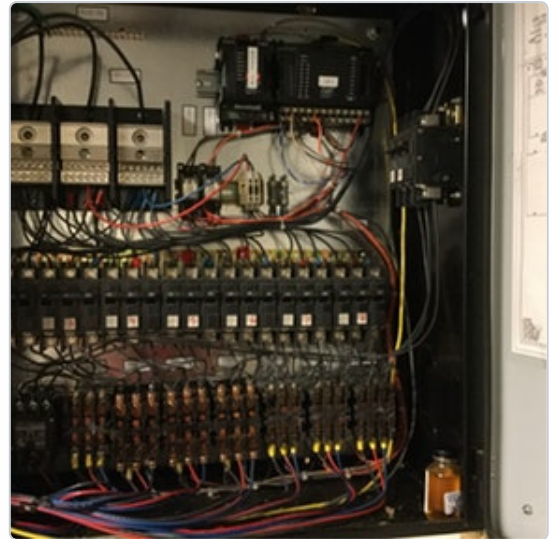
 **Unassigned****Post 54 - Condenser Feeds****Rob Stubbs** - Crescent Construction Services

8/16/2019, 2:01 PM EDT

To: Crescent Construction Services

Fans on each condenser are fed individually from breakers in each rack. Single main breaker in rack feeds termination strip to feed each breaker/fan.

Location  *Mechanical Room*All Media  *8 photos*





Unassigned

Post 47 - Panel breakers powered off



Rob Stubbs - Crescent Construction Services

8/16/2019, 2:01 PM EDT

To: Crescent Construction Services

Store is currently unoccupied with majority of breakers in branch panels powered off.

Location  *Entire Store*

 **Unassigned****Post 9 - Canopy Sprinkler System****Dave Beretsky** - Crescent Construction Services

8/16/2019, 2:01 PM EDT

To: Crescent Construction Services

Is in place.

Location  *Front Canopy*All Media  *2 photos*

 **Unassigned****Post 10 - Emergency Lighting****Dave Beretsky - Crescent Construction Services**

8/16/2019, 2:01 PM EDT

To: Crescent Construction Services

No EBU's present, selected lighting fed from panel EM with generator backup.

Location  *Entire Store*All Media  *2 photos*

 **Unassigned**

Post 23 - Grinder - (For Reference Only)



Dave Beretsky - Crescent Construction Services

8/16/2019, 2:01 PM EDT

To: Crescent Construction Services

No equipment present. Cord and plug only.

Location  *Meat Prep*

All Media  *1 photo*



 **Unassigned****Post 15 - Meat Saw - (For Reference Only)****Dave Beretsky** - Crescent Construction Services

8/16/2019, 2:01 PM EDT

To: Crescent Construction Services

No equipment present. Cord and plug only.

Location  *Meat Prep*All Media  *1 photo*



Unassigned

Post 14 - Existing MC Cabling Home-runs




Dave Beretsky - Crescent Construction Services

8/16/2019, 2:01 PM EDT

To: Crescent Construction Services

No existing runs are present. No new MC is to be installed as a home run.

Location  *Entire Store*

 **Unassigned****Post 11 - Conduit Fittings And Support****Dave Beretsky** - Crescent Construction Services

8/16/2019, 2:01 PM EDT

To: Crescent Construction Services

Conduit is strapped, fittings are compression type. New fittings are to be compression type.

Location  **Entire Store**All Media  **2 photos**

 **Unassigned**

Post 5 - SweatMiser - Anti-sweat control panel not present



Dave Beretsky - Crescent Construction Services

8/16/2019, 2:00 PM EDT

To: Crescent Construction Services

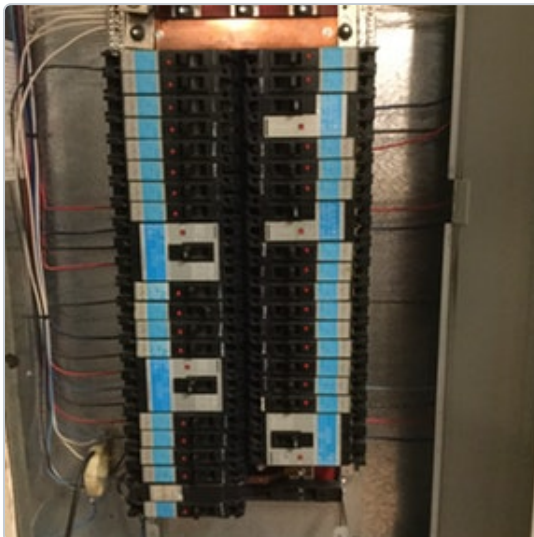
Location  *Entire Store*

 Unassigned**Post 7 - Gas Rack Oven****Dave Beretsky - Crescent Construction Services**

8/16/2019, 2:00 PM EDT

To: Crescent Construction Services

Fed from BDM #38, 40, 42, 20 amp breaker, 10 AWG. There does appear to be room on deli wall at deli electrical panels for a remote mounted breaker, engineer to review alternate locations as needed. Panel D will not accommodate larger than a 100 amp breaker in circuits 1-42. If larger than 100 amp breaker is required for New Rack Oven, install as remote breaker from panel BDM.

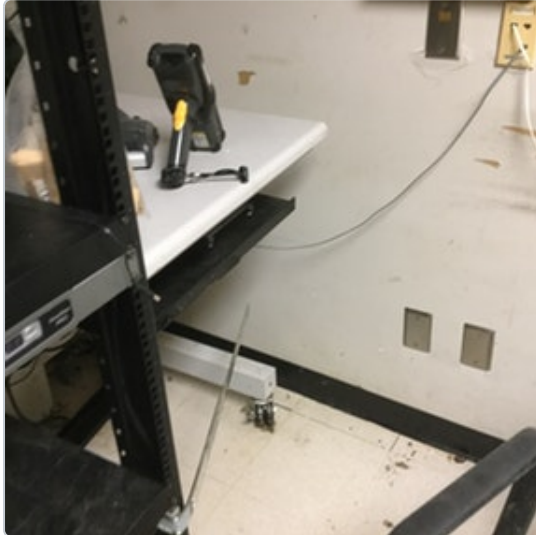
Location  **Deli Prep**All Media  **4 photos**

 **Unassigned****Post 44 - Store does not have UPS system for panel POS (Register panel)****Rob Stubbs** - Crescent Construction Services

8/16/2019, 2:00 PM EDT

To: Crescent Construction Services

POS is fed via panel EM which has ATS and generator backup.

Location  *Office*All Media  *4 photos*

 **Unassigned****Post 46 - 30 kVA Transformer****Rob Stubbs** - Crescent Construction Services

8/16/2019, 2:00 PM EDT

To: Crescent Construction Services

Feeds POS from EM.

Location  **Mechanical Room**All Media  **3 photos**

 **Unassigned****Post 45 - Transfer Switch****Rob Stubbs** - Crescent Construction Services

8/16/2019, 2:00 PM EDT

To: Crescent Construction Services

Feeds panel EM from DP.

Location  *Mechanical Room*All Media  *2 photos*

 **Unassigned****Post 1 - Utility Transformer****Dave Beretsky - Crescent Construction Services**

8/16/2019, 2:00 PM EDT

To: Crescent Construction Services

Location  **Outside**All Media  **2 photos**

System: 208Y/120V, 3PH 4W			
Enclosure Type 1		Manufacturing Date 03/92	
Supply	Section	Bus	SUITABLE ONLY
3000A	3000A	Mains	FOR USE AS
3000A	3000A	Neutral	SERVICE EQUIPMENT

The short circuit current rating of this switchboard section is 100,000 RMS symmetrical amperes at 240 volts max. The short circuit current rating is limited to the lowest short circuit current rating of any switchboard section connected in series or the lowest short circuit rating of any device installed. Additional or replacement devices shall be of the same manufacture, type designation, and short circuit rating. This section contains a bonding jumper and a grounding terminal and a neutral disconnect.



DEADFRONT SWITCHBOARD SECTION

3 0 3

607683

Printed in U.S.A.

Breaker handle in intermediate position indicates tripped. To reset, move handle to extreme off position, then on.



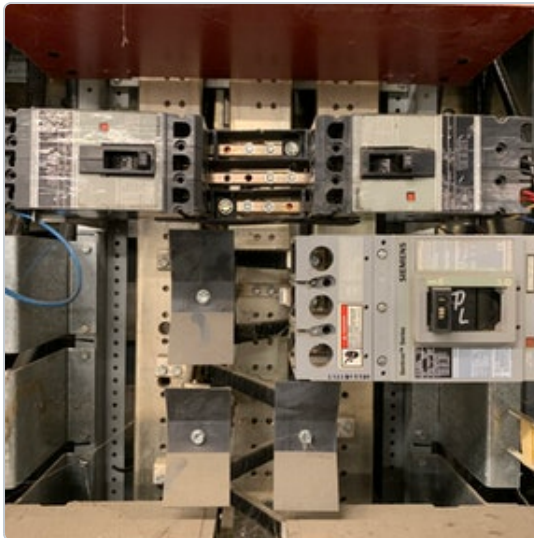
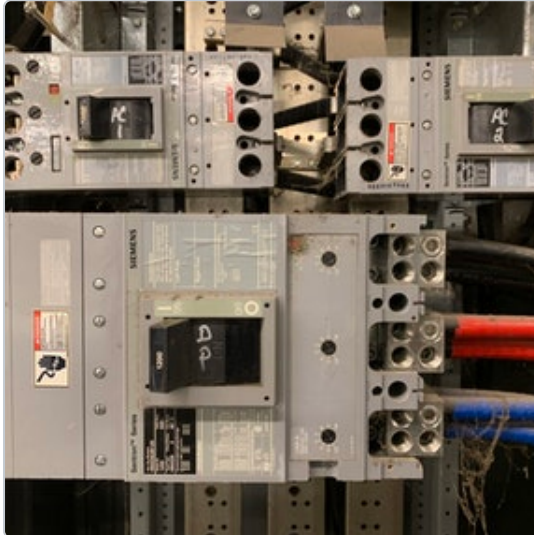
⚡ DANGER

Hazardous voltage.
Will cause death or serious injury.

 **Unassigned****Post 39 - Panel MDP-2 Data****Mason Perkins - Crescent Construction Services**

8/16/2019, 2:00 PM EDT

To: Crescent Construction Services

Location  **Dock**All Media  **5 photos**

Page 39 of 68

 **Unassigned****Post 40 - Panel MDP-3 Data****Mason Perkins - Crescent Construction Services**

8/16/2019, 2:00 PM EDT

To: Crescent Construction Services

All fuse enclosures 400 amps.

Location  **Dock**All Media  **5 photos**

Page 41 of 68

[illegible]

 Unassigned

Post 43 - Panel DP Data



Mason Perkins - Crescent Construction Services

8/16/2019, 2:00 PM EDT

To: Crescent Construction Services

Location  Mechanical RoomAll Media  7 photos

[illegible]

 **Unassigned**

Post 49 - Bus Bolt Pattern In MDP-2



Rob Stubbs - Crescent Construction Services

To: Crescent Construction Services

8/16/2019, 2:00 PM EDT

Location  **Dock**

All Media  **1 photo**



 **Unassigned****Post 4 - Bus Bolt Pattern In MDP-3****Dave Beretsky - Crescent Construction Services**

8/16/2019, 2:00 PM EDT

To: Crescent Construction Services

Fused section

Location  *Dock*All Media  *2 photos*

 **Unassigned**

Post 50 - Bus Bolt Pattern In DP



Rob Stubbs - Crescent Construction Services

To: Crescent Construction Services

8/16/2019, 1:59 PM EDT

Location  *Mechanical Room*

All Media  *1 photo*



 **Unassigned**

Post 19 - Disconnect Inventory - (See attachment)



Dave Beretsky - Crescent Construction Services

8/16/2019, 1:59 PM EDT

To: Crescent Construction Services

Location  *Entire Store*

Attachments  [FL2250_Disconnects.pdf \(20.4 kB\)](#)



Open

Post 16 - Panel Schedule Labeling**Dave Beretsky - Crescent Construction Services**

8/16/2019, 1:58 PM EDT

To: Assignees, Crescent Construction Services

All schedules are to be 100% accurate, on card stock, typed, dated, and installed in a clear pocket. EC shall go through ALL existing electrical panels to trace and verify all circuits for accuracy. Receptacles and lighting are to be labeled by area/location. Sales floor lighting circuits are to include row number. Case circuits are to reference refrigeration circuits. Spare is a breaker with no wire. Blank is an empty slot. All wired and active breakers shall be properly scheduled. Note: Wired breakers with no active load / device shall be labeled as Spare, Ending Location. Do Not remove existing panel schedules. Electronic copies of all panel schedules are required at closeout.

Location

Entire Store

Assigned To

**Electrical Contractor**

No due date

Open



Open

Post 34 - Panel A Date: Schedule Incorrect**Mason Perkins - Crescent Construction Services**

8/16/2019, 1:58 PM EDT

To: Assignees, Crescent Construction Services

Location

Mechanical Room

Assigned To

**Electrical Contractor**

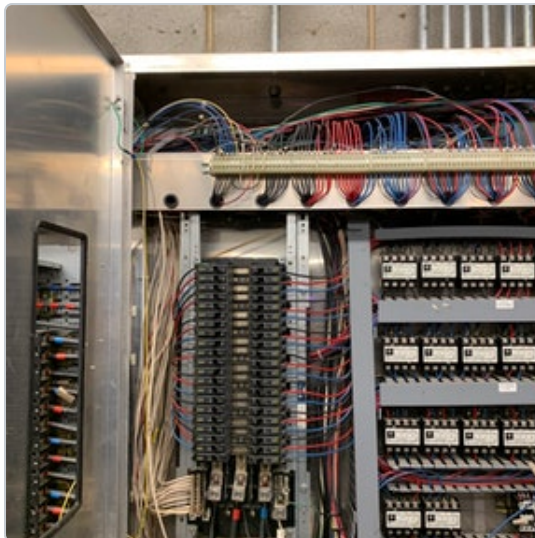
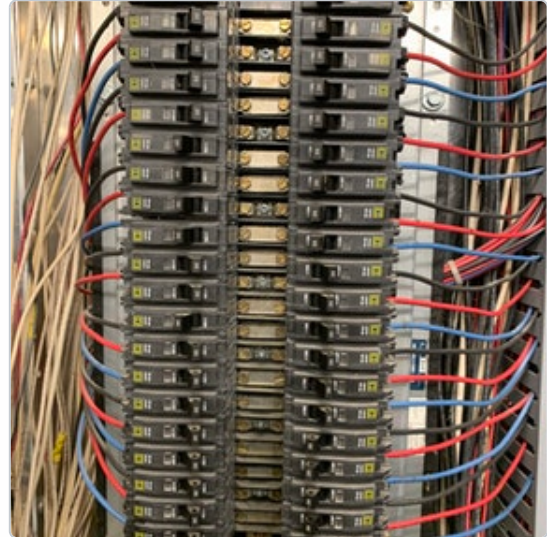
No due date

Open

All Media

4 photos

PANEL -A								
Phase Loads	A Phase		B Phase		C Phase		Neutral	
Circuit	Pole	AWG	Amp		Amp	AWG	Pole	Circuit
1	1	10	20		20	10	1	2
3	1	10	20		20	10	1	4
5	1	10	20		20	10	1	6
7	1	10	20		20	10	1	8
9	1	10	20		20	10	1	10
11	1	spare	20		20	10	1	12
13	1	10	20		20	10	1	14
15	1	10	20		20	10	1	16
17	1	10	20		20	10	1	18
19	1	10	20		20	10	1	20
21	1	10	20		20	10	1	22
23	1	spare	20		20	10	1	24
25	1	10	20		20	10	1	26
27	1	10	20		20	10	1	28
29	1	10	20		20	10	1	30
31	1	10	20		20	10	1	32
33	1	10	20		20	10	1	34
35	1	10	20		20	10	1	36
37	1	10	20		20	10	1	38
39	1	10	20		20	10	1	40
41	1	10	20		20	10	1	42



[Open](#)**Post 35 - Panel B Data: Schedule Incorrect****Mason Perkins - Crescent Construction Services**

8/16/2019, 1:58 PM EDT

To: Assignees, Crescent Construction Services

Location

Mechanical Room

Assigned To

**Electrical Contractor**

No due date

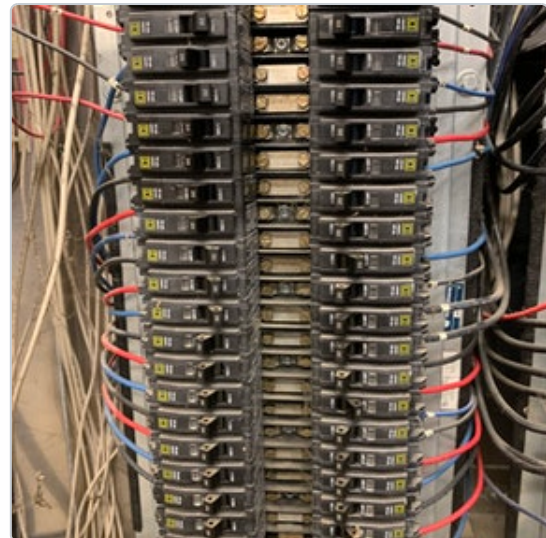
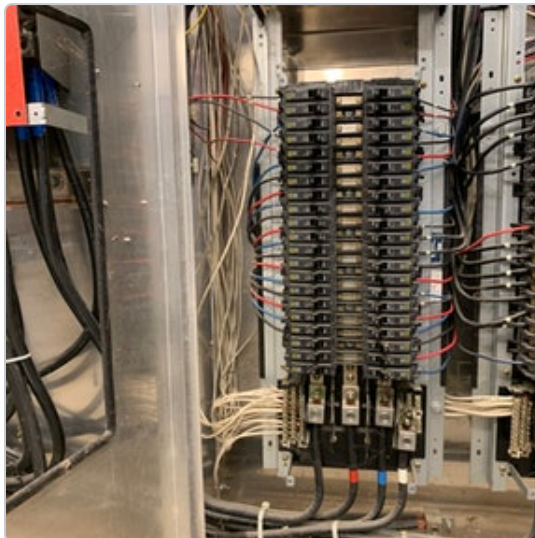
[Open](#)

All Media

4 photos

PANEL -B

Phase Loads	A Phase:		B Phase:		C Phase:		Neutral:	
Circuit	Pole	AWG	Amp		Amp	AWG	Pole	Circuit
1	1	12	20		20	12	1	2
3	1	12	20		20	12	1	4
5	1	10	20		20	12	1	6
7	1	12	20		20	10	1	8
9	1	12	20		20	10	1	10
11	1	10	20		20	10	1	12
13	1	10	20		20	Spare	1	14
15	1	10	20		20	Spare	1	16
17	1	10	20		20	10	1	18
19	1	10	20		20	12	1	20
21	1	10	20		20	8	1	22
23	1	10	20		20	8	1	24
25	1	10	20		20	10	1	26
27	1	10	20		20	10	1	28
29	1	10	20		20	12	1	30
31	1	10	20		20	12	1	32
33	1	10	20		20	10	1	34
35	1	10	20		20	10	1	36
37	1	10	20		20	10	1	38
39	1	Spare	20		20	10	1	40
41	1	Spare	20		20	10	1	42





Open

Post 59 - Panel BDA Data: Schedule Incorrect**Ryan Lasker - Crescent Construction Services**

8/16/2019, 1:58 PM EDT

To: Assignees, Crescent Construction Services

Location

Deli Prep

Assigned To

**Electrical Contractor**

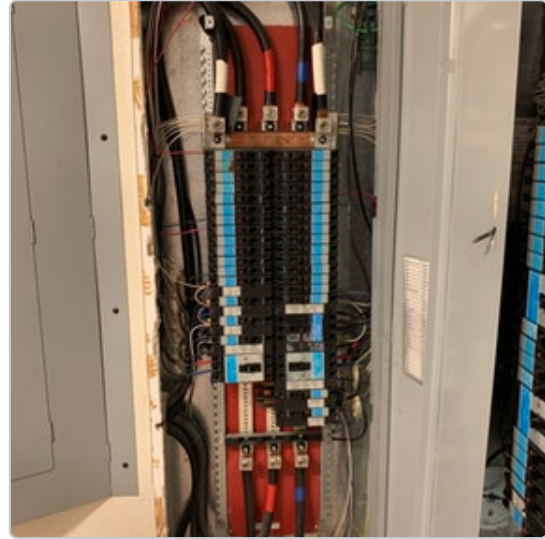
No due date

Open

All Media

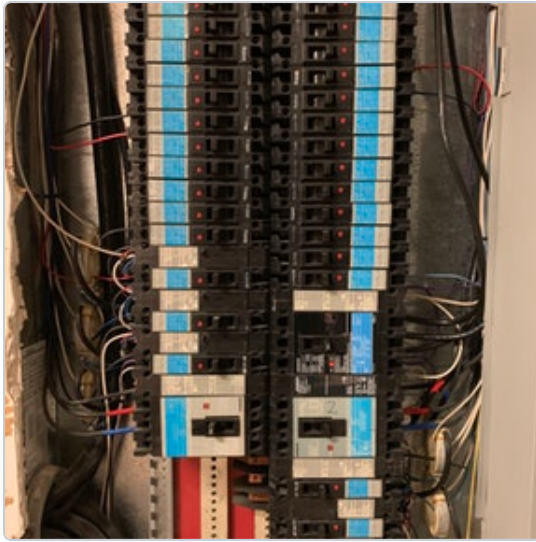
5 photos

1	1	12	20		20	Spare	1	2
3	1	Spare	20		20	Spare	1	4
5	1	Spare	20		20	Spare	1	6
7	1	Spare	20		20	Spare	1	8
9	1	Spare	20		20	12	1	10
11	1	Spare	20		20	12	1	12
13	1	12	20		20	Spare	1	14
15	1	12	20		20	Spare	1	16
17	1	Spare	20		20	Spare	1	18
19	1	Spare	20		20	Spare	1	20
21	1	Spare	20		20	Spare	1	22
23	1	Spare	20		20	Spare	1	24
25	1	12	20		20	Spare	1	26
27	Shunt				20	Spare	1	28
29	1	12	20		20	12	1	30
31	Shunt						Shunt	32
33	1	12	20		80	4	3	34
35	Shunt				80	4	3	36
37	1	12	20		80	4	3	38
39	Shunt						Shunt	40
41	3	10	50		35	6	3	42
43	3	10	50		35	6	3	44
45	3	10	50		35	6	3	46
47	Blank						Shunt	48
49	Blank				20	12	1	50



1	Spare	10	Spare	10	Spare	10	Spare
3	Spare	10	Spare	10	Spare	10	Spare
5	Spare	10	Spare	10	Spare	10	Spare
7	Spare	10	Spare	10	Spare	10	Spare
9	Spare	10	Spare	10	Spare	10	Spare
11	Spare	10	Spare	10	Spare	10	Spare
13	Spare	10	Spare	10	Spare	10	Spare
15	Spare	10	Spare	10	Spare	10	Spare
17	Spare	10	Spare	10	Spare	10	Spare
19	Spare	10	Spare	10	Spare	10	Spare
21	Spare	10	Spare	10	Spare	10	Spare
23	Spare	10	Spare	10	Spare	10	Spare
25	Spare	10	Spare	10	Spare	10	Spare
27	Spare	10	Spare	10	Spare	10	Spare
29	Spare	10	Spare	10	Spare	10	Spare
31	Spare	10	Spare	10	Spare	10	Spare
33	Spare	10	Spare	10	Spare	10	Spare
35	Spare	10	Spare	10	Spare	10	Spare
37	Spare	10	Spare	10	Spare	10	Spare
39	Spare	10	Spare	10	Spare	10	Spare
41	Spare	10	Spare	10	Spare	10	Spare
43	Spare	10	Spare	10	Spare	10	Spare
45	Spare	10	Spare	10	Spare	10	Spare
47	Spare	10	Spare	10	Spare	10	Spare
49	Spare	10	Spare	10	Spare	10	Spare

1	1	12		20	Spare	1	2
3	1	Spare		20	Spare	1	4
5	1	Spare		20	Spare	1	6
7	1	Spare		20	Spare	1	8
9	1	Spare		20	12	1	10
11	1	Spare		20	12	1	12
13	1	12		20	Spare	1	14
15	1	12		20	Spare	1	16
17	1	Spare		20	Spare	1	18
19	1	Spare		20	Spare	1	20
21	1	Spare		20	Spare	1	22
23	1	Spare		20	Spare	1	24
25	1	12		20	Spare	1	26
27	Shunt			20	Spare	1	28
29	1	12		20	12	1	30
31	Shunt					Shunt	32
33	1	12		80	4	3	34
35	Shunt			80	4	3	36
37	1	12		80	4	3	38
39	Shunt					Shunt	40
41	3	10		35	6	3	42
43	3	10		35	6	3	44
45	3	10		35	6	3	46
47	Blank					Shunt	48
49	Blank			20	12	1	50



Open

Post 58 - Panel BDB Data: Schedule Incorrect



Ryan Lasker - Crescent Construction Services

8/16/2019, 1:58 PM EDT

To: Assignees, Crescent Construction Services

Location Deli Prep

Assigned To

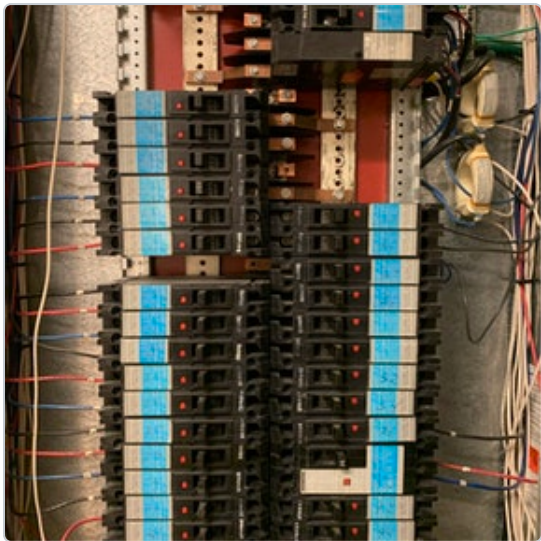
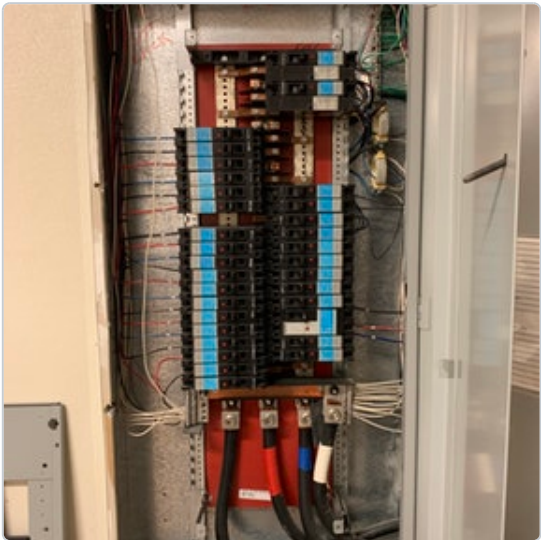
Electrical Contractor

No due date

Open

All Media 4 photos

Phase Loads	A Phase	B	B Phase	C	C Phase	Neutral	
Circuit	Pole	AWG	Amp		Amp	AWG	Pole
1	Blank				20	12	1
3	Blank						Shunt
5	Blank				20	12	1
7	Blank						Shunt
9	Blank						Blank
11	1	10	20				Blank
13	1	10	20				Blank
15	1	10	20				Blank
17	1	10	20				Blank
19	1	10	20		20	12	1
21	1	12	20		20	12	1
23	Blank				20	12	1
25	1	10	20		20	Spare	1
27	1	10	20		20	Spare	1
29	1	12	20		20	Spare	1
31	1	12	20		20	Spare	1
33	1	12	20		20	Spare	1
35	1	12	20		20	Spare	1
37	1	12	20		25	10	2
39	1	12	20		25	12	2
41	1	12	20		20	10	1
43	1	12	20		20	Spare	1
45	1	12	20				Blank





Open

Post 33 - Panel BDM Data: Schedule Incorrect



Mason Perkins - Crescent Construction Services

8/16/2019, 1:58 PM EDT

To: Assignees, Crescent Construction Services

Location

Deli Prep

Assigned To



Electrical Contractor

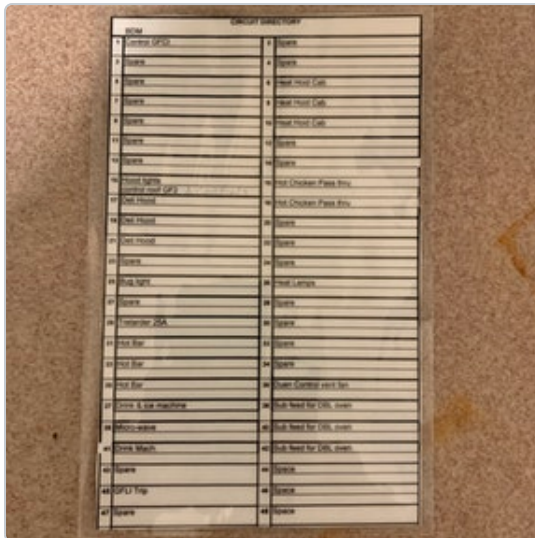
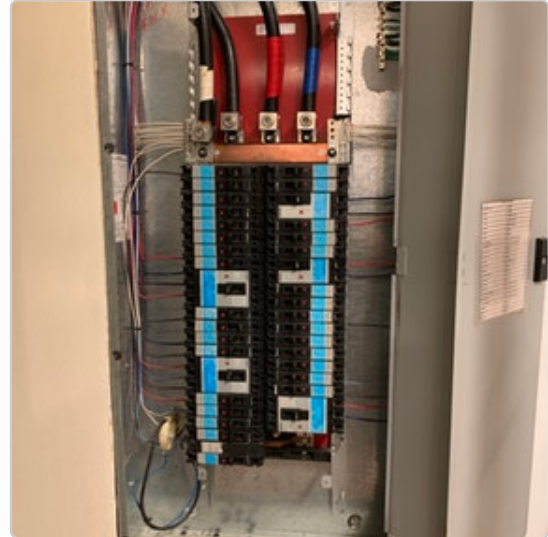
No due date

Open

All Media

4 photos

Phase Leads	A Phase:	B Phase:	C Phase:	Neutral:	
Circuit	Pole	AMP	AMP	Pole	Circuit
1	1	12	20	1	2
3	1	Spare	20	1	4
5	1	Spare	20	2	6
7	1	Spare	20	2	8
9	1	Spare	20	1	10
11	1	Spare	20	1	12
13	1	Spare	20	1	14
15	1	12	20	2	16
17	3	10	20	2	18
19	3	10	20	1	20
21	3	10	20	1	22
23	1	Spare	35	1	24
25	1	12	15	1	26
27	1	Spare	20	1	28
29	1	10	25	1	30
31	3	12	20	1	32
33	3	10	20	1	34
35	3	12	20	1	36
37	1	12	20	3	38
39	1	12	20	3	40
41	1	12	20	3	42
43	1	Spare	20		44
45	Shunt				46



**Open****Post 69 - Panel C-1 Data: Schedule Incorrect****Ryan Lasker - Crescent Construction Services**

8/16/2019, 1:58 PM EDT

To: Assignees, Crescent Construction Services

Location

Mechanical Room

Assigned To

**Electrical Contractor**

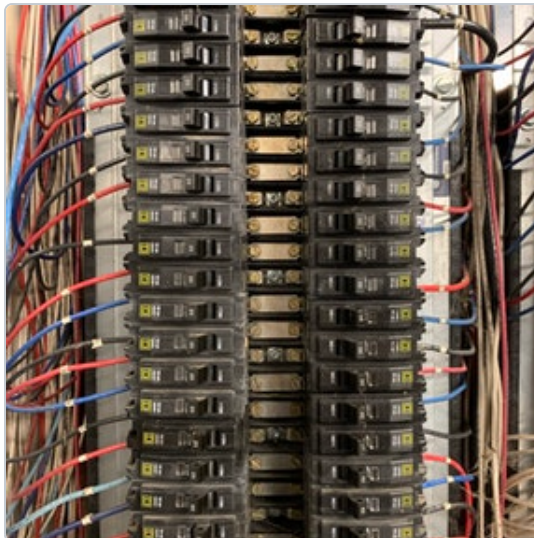
No due date

Open

All Media

4 photos

Phase Leads	A Phase	B Phase	C Phase	Neutral	Ground
Circuit	Pole	AMP	Amp	Pole	Circuit
1	1	12	20	15	12
3	1	12	20	25	6
5	1	12	20	20	12
7	1	12	20	20	12
9	1	12	20	20	Spare
11	1	10	20	20	12
13	1	10	20	20	12
15	1	10	20	20	12
17	1	Spare	20	20	12
19	1	12	20	20	Spare
21	1	12	20	20	10
23	1	12	20	20	12
25	1	12	20	20	12
27	1	12	20	20	12
29	1	12	20	20	12
31	1	12	20	20	12
33	1	12	20	20	12
35	1	10	20	20	12
37	1	10	20	20	12
39	1	10	20	20	12
41	1	10	20	20	12





Open

Post 70 - Panel C-2 Data: Schedule Incorrect**Ryan Lasker - Crescent Construction Services**

8/16/2019, 1:58 PM EDT

To: Assignees, Crescent Construction Services

Location

Mechanical Room

Assigned To



Electrical Contractor

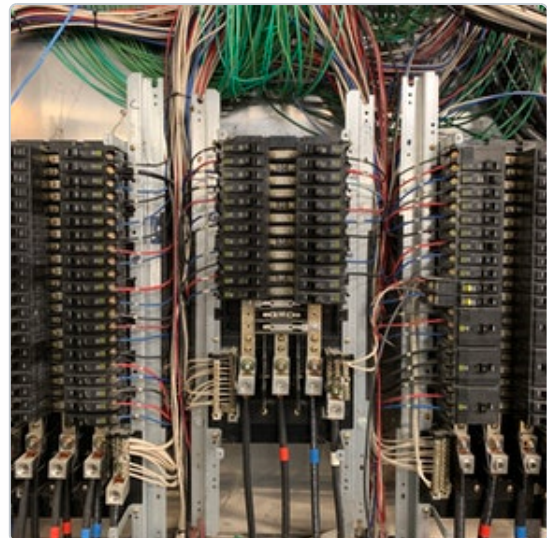
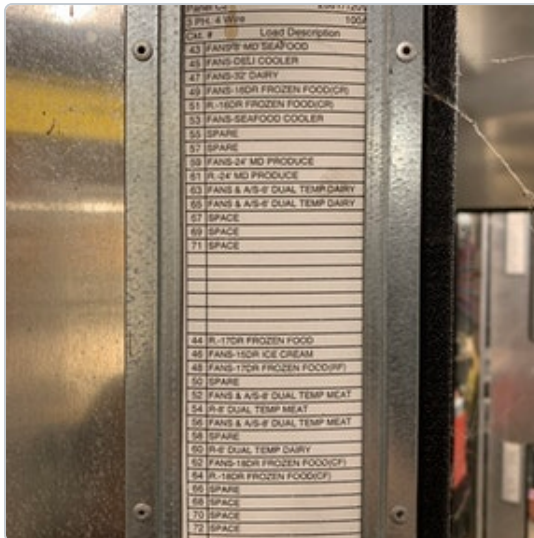
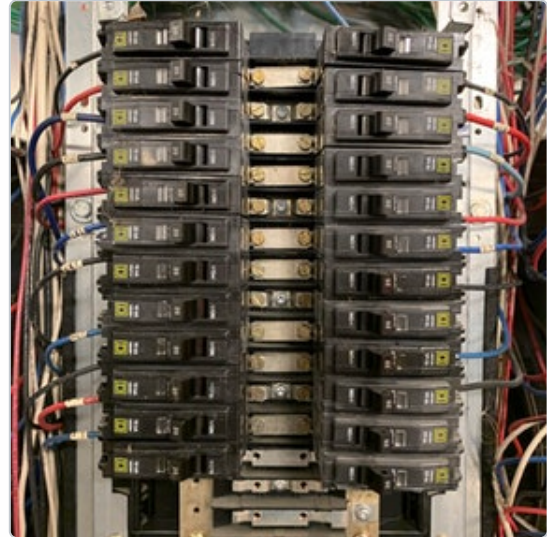
No due date

Open

All Media

4 photos

PANEL - C-2								
Phase Loads	A Phase	B Phase	C Phase	Neutral				
Circuit	Pole	AWG	Amp	Amp	AWG	Pole	Circuit	
43	1	12	20	20	12	1	44	
45	1	12	20	20	10	1	46	
47	1	10	20	20	10	1	48	
49	1	10	20	20	Spare	1	50	
51	1	12	20	20	12	1	52	
53	1	12	20	20	12	1	54	
55	1	12	20	20	12	1	56	
57	1	Spare	20	20	Spare	1	58	
59	1	12	20	20	12	1	60	
61	1	12	20	20	10	1	62	
63	1	12	20	20	Spare	1	64	
65	1	12	20	20	Spare	1	66	
67	Blank					Blank	68	
69	Blank					Blank	70	
71	Blank					Blank	72	



 **Open****Post 78 - Panel D-1 Data: Schedule Incorrect****Dave Beretsky** - Crescent Construction Services

8/16/2019, 1:57 PM EDT

To: Assignees, Crescent Construction Services

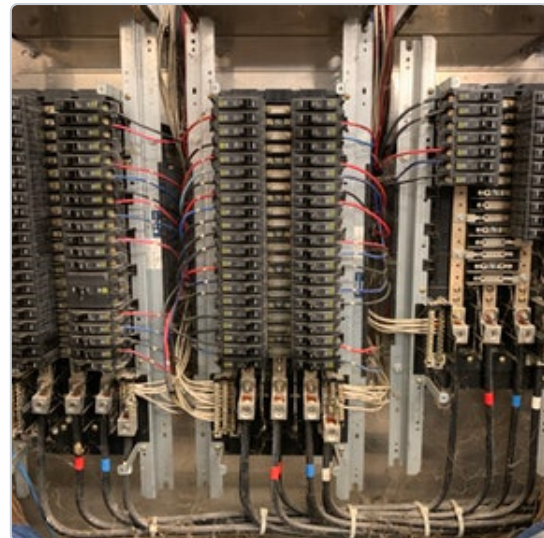
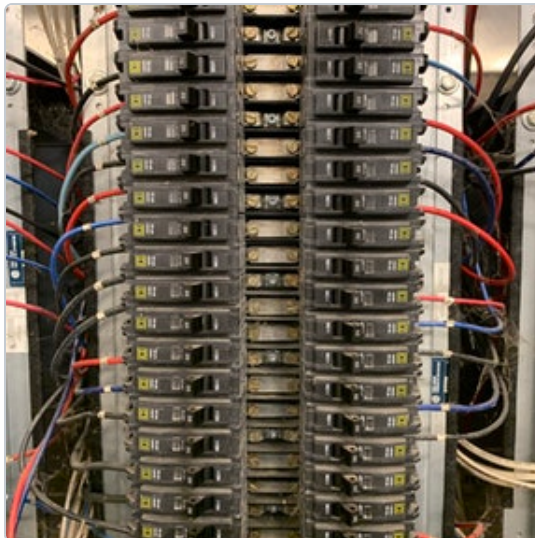
Location **Mechanical Room**Assigned To **Electrical Contractor**

No due date

OpenAll Media **4 photos**

PANEL - D-1								
Phase Loads	A Phase		B Phase		C Phase		Neutral	
Circuit	Pole	AWG	Amp		Amp	AWG	Pole	Circuit
1	1	Spare	20		20	Spare	1	2
3	1	10	20		20	12	1	4
5	1	Spare	20		20	12	1	6
7	1	10	15		20	Spare	1	8
9	1	12	20		20	10	1	10
11	1	10	20		20	10	1	12
13	1	10	20		20	10	1	14
15	1	10	20		20	10	1	16
17	1	12	20		20	Spare	1	18
19	1	10	20		20	Spare	1	20
21	1	8	20		20	12	1	22
23	1	8	20		20	12	1	24
25	1	Spare	20		20	12	1	26
27	1	10	20		20	Spare	1	28
29	1	10	20		20	10	1	30
31	1	10	20		20	12	1	32
33	1	Spare	20		20	Spare	1	34
35	1	8	20		20	Spare	1	36
37	1	8	20		20	Spare	1	38
39	1	10	20		20	10	1	40
41	1	12	20		20	12	1	42

Ckt #	Load Description
1	SPARE
3	LTS-36 LUNCH MEATS
5	LTS-6 SHINGLED MEAT
7	LTS-12 CHEESE ISLANDS
9	LTS-6 DR. FRZN MEATS
11	LTS-28 DAIRY W/ REAR LOAD
13	LTS-12 FRZN CAKES
15	LTS-36 M.O. MEATS
17	SPARE 12" DR. FRZN MEAT
19	LTS-24 M.O. PRODUCE
21	LTS-18 DR. FRZN FOOD
23	LTS-18 DR. FRZN FOOD
25	LTS-18 DR. FRZN FOOD
27	LTS-12 DR. FRZN FOOD
29	LTS-18 DR. FRZN FOOD
31	LTS-40 PRODUCE WMS TNG
33	LTS-18 DRY FRUITS & NUTS
35	LTS-28 COLD BEER
37	LTS-28 COLD BEER
39	SPARE 12" DR. FRZN MEAT
41	LTS-12 SS CAKE CASE
2	SPARE
4	LTS-5 DR. FROZEN SEAFOOD
6	LTS-8 M.O. SEAFOOD
8	SPARE
10	LTS-13 DR. ICE CREAM
12	LTS-13 DR. ICE CREAM
14	LTS-18 DR. FRZN FOOD
16	LTS-18 DR. FRZN FOOD
18	SPARE
20	LTS-GONDOLA CANOPY
22	LTS-GONDOLA CANOPY
24	LTS-GONDOLA CANOPY
26	LTS-GONDOLA CANOPY
28	SPARE
30	LTS-22 PRODUCE WMS TNG
32	LTS-DRY SHELVEING



Open

Post 74 - Panel D-2 Data: Schedule Incorrect



Ryan Lasker - Crescent Construction Services

8/16/2019, 1:57 PM EDT

To: Assignees, Crescent Construction Services

Location Mechanical Room

Assigned To

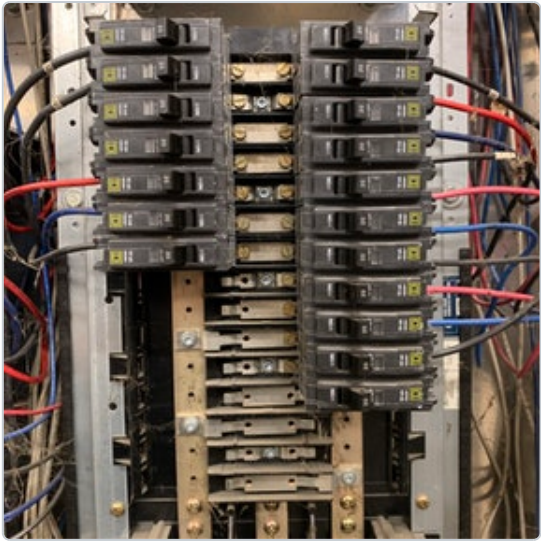
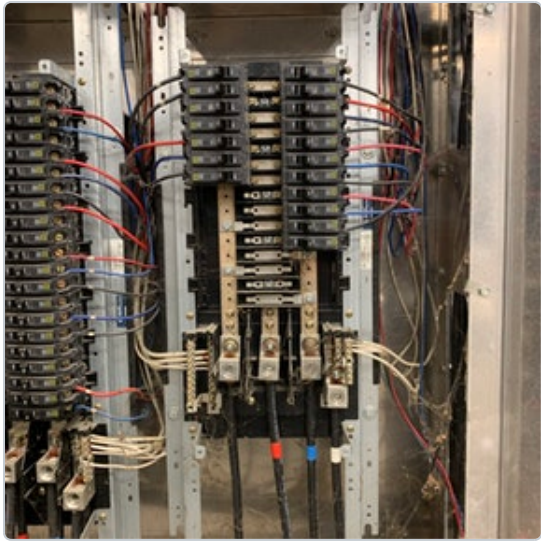
Electrical Contractor

No due date

Open

All Media 4 photos

PANEL - D-2									
Phase Loads	A Phase	0	B Phase	0	C Phase	0	Neutral	0	
Circuit	Pole	AWG	Amp		Amp	AWG	Pole	Circuit	
43	1	8	20		20	10	1	44	
45	1	8	20		20	10	1	46	
47	1	Spare	20		20	10	1	48	
49	1	Spare	20		20	10	1	50	
51	1	10	20		20	10	1	52	
53	1	10	20		20	10	1	54	
55	1	10	20		20	10	1	56	
57	Blank				20	10	1	58	
59	Blank				20	10	1	60	
61	Blank				20	10	1	62	
63	Blank				20	Spare	1	64	
65	Blank						Blank	66	
67	Blank						Blank	68	
69	Blank						Blank	70	
71	Blank						Blank	72	



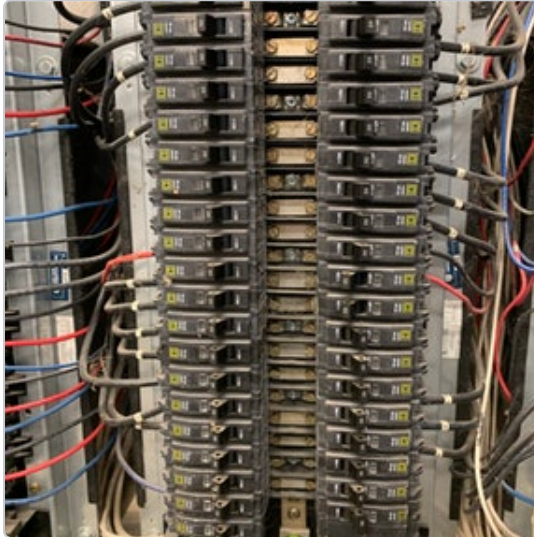
 Open**Post 36 - Panel E Data: Schedule Incorrect****Mason Perkins - Crescent Construction Services**

8/16/2019, 1:57 PM EDT

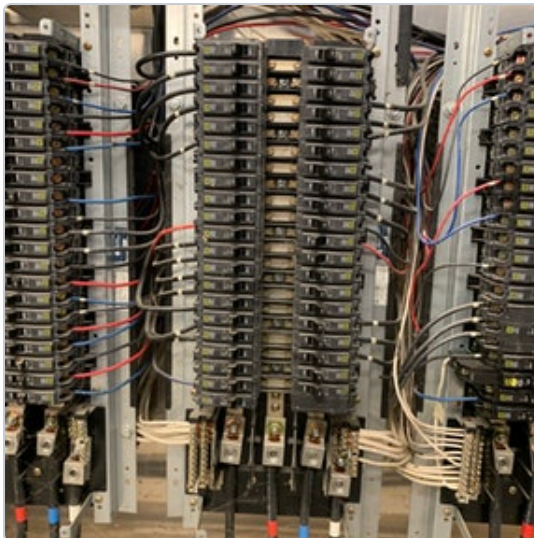
To: Assignees, Crescent Construction Services

Location **Mechanical Room**Assigned To  **Electrical Contractor**

No due date

 OpenAll Media  4 photos

PANEL - E										
Phase Loads	A Phase:		B Phase:			C Phase:		Neutral:		
Circuit	Pole	AWG	Amp			Amp	AWG	Pole	Circuit	
1	1	6	20			20	Spare	1	2	
3	1	6	20			20	Spare	1	4	
5	1	6	20			20	6	1	6	
7	1	6	20			20	6	1	8	
9	1	Spare	20			20	6	1	10	
11	1	6	20			20	Spare	1	12	
13	1	Spare	20			20	6	1	14	
15	1	Spare	20			20	6	1	16	
17	1	Spare	20			20	6	1	18	
19	1	Spare	20			20	10	1	20	
21	1	10	20			20	10	1	22	
23	1	6	20			20	Spare	1	24	
25	1	6	20			20	Spare	1	26	
27	1	6	20			20	Spare	1	28	
29	1	6	20			20	Spare	1	30	
31	1	6	20			20	6	1	32	
33	1	6	20			20	6	1	34	
35	1	6	20			20	6	1	36	
37	1	Spare	20			20	Spare	1	38	
39	1	Spare	10			20	Spare	2	40	
41	1	10	20			20	Spare	2	42	



**Open****Post 66 - Panel EM Data: Schedule Incorrect****Ryan Lasker - Crescent Construction Services**

8/16/2019, 1:57 PM EDT

To: Assignees, Crescent Construction Services

Location

Mechanical Room

Assigned To

**Electrical Contractor**

No due date

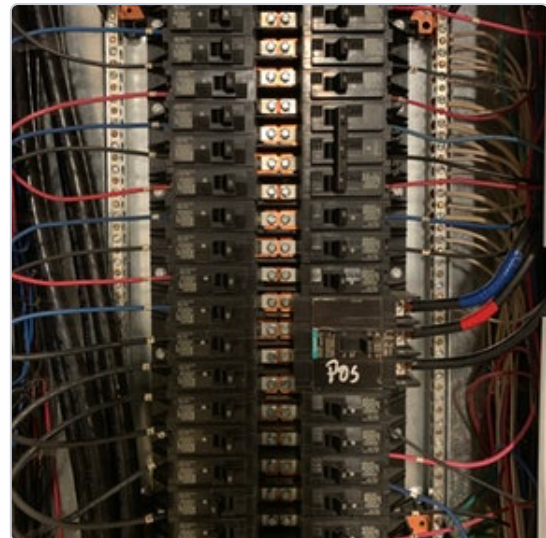
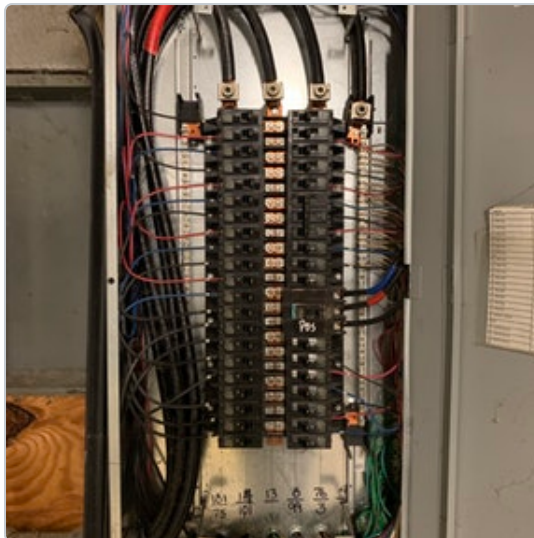
Open

All Media

4 photos

Phase Loads	A Phase	B1	B Phase	40	C Phase	B5	Neutral	10
Circuit	Pole	AWG	Amp		Amp	AWG	Pole	Circuit
1	1	10	20		20	12	1	2
3	1	10	20		20	12	1	4
5	1	10	20		20	Spare	1	6
7	1	10	20		20	12	1	8
9	1	10	20		20	12	1	10
11	1	10	20		30	10	3	12
13	1	10	20		30	10	3	14
15	1	10	20		30	10	3	16
17	1	10	20		20	10	1	18
19	1	10	20		20	10	1	20
21	1	10	20		20	Spare	1	22
23	1	10	20		100	2	3	24
25	1	8	20		100	2	3	26
27	1	8	20		100	2	3	28
29	1	8	20		20	Spare	1	30
31	1	8	20		20	12	1	32
33	1	8	20		20	10	1	34
35	1	Spare	20		20	10	1	36
37	1	8	20		20	12	1	38
39	1	8	20		20	12	1	40
41	1	8	20		20	12	1	42

1	Sales Area	2	OSD Cabinet
3	Sales Area	4	S. Mezz <i>M/R</i>
5	Sales Area	6	Spare
7	Sales Area	8	S. Stock RM
9	Sales Area	10	S. Stock RM
11	Sales Area	12	M.R. Exhaust Fan
13	Sales Area	14	M.R. Exhaust Fan
15	Sales Area	16	M.R. Exhaust Fan
17	Sales Area	18	Auto door front store
19	Sales Area	20	Auto door front store
21	Sales Area	22	Spare
23	Sales Area	24	Panel POS Top transformer
25	Sales Area	26	Panel POS Transformer
27	Sales Area	28	Panel post transformer
29	Sales Area	30	Spare
31	Sales Area	32	Battery Charger
33	Sales Area	34	UL 100 AC1
35	Sales Area	36	UL 100 AC1
37	Sales Area	38	UL 100 AC1
39	Sales Area	40	UL 100 AC1
41	Sales Area	42	UL 100 AC1



Open

Post 29 - Panel F Data: Schedule Incorrect



Ryan Lasker - Crescent Construction Services

8/16/2019, 1:57 PM EDT

To: Assignees, Crescent Construction Services

Location Office

Assigned To

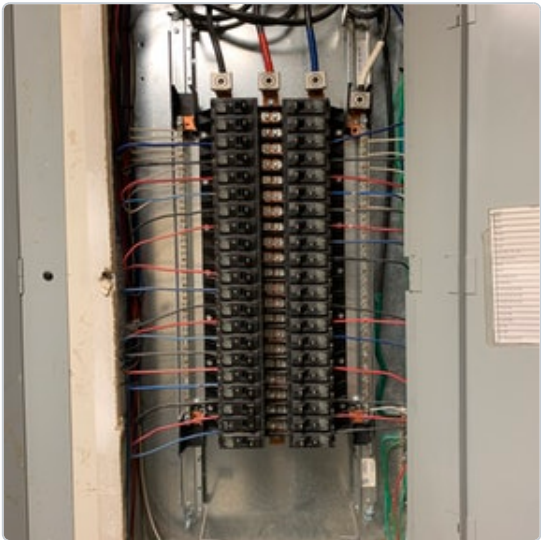
Electrical Contractor

No due date

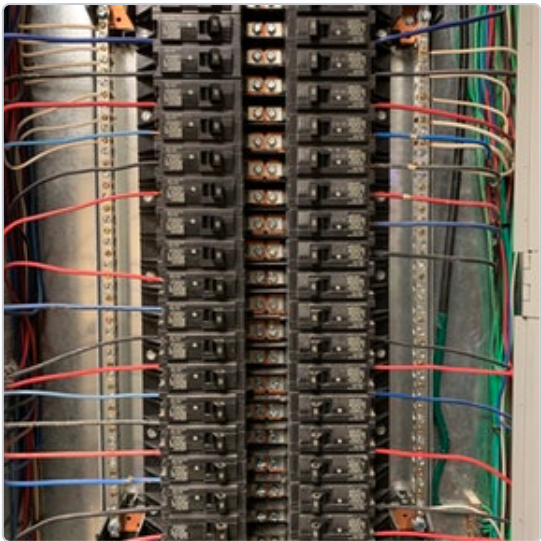
Open

All Media 4 photos

PANEL - F								
Phase Loads	A Phase	B Phase	C Phase	Neutral				
Circuit	Pole	AWG	Amp	Amp	AWG	Pole	Circuit	
1	1	Spare	20	20	Spare	1	2	
3	1	Spare	20	20	Spare	1	4	
5	1	10	20	20	10	1	6	
7	1	10	20	20	10	1	8	
9	1	10	20	20	10	1	10	
11	1	12	20	20	10	1	12	
13	1	12	20	20	10	1	14	
15	1	12	20	20	10	1	16	
17	1	Spare	20	20	10	1	18	
19	1	Spare	20	20	10	1	20	
21	1	12	20	20	Spare	1	22	
23	1	10	20	20	Spare	1	24	
25	1	12	20	20	12	1	26	
27	1	12	20	20	12	1	28	
29	1	12	20	20	12	1	30	
31	1	10	20	20	Spare	1	32	
33	1	10	20	20	12	1	34	
35	1	10	20	20	Spare	1	36	
37	2	10	30	20	12	1	38	
39	2	10	30	20	12	1	40	
41	1	12	20	20	12	1	42	



1	Spare	2	Spare
3	Spare	4	Spare
5	Reg #1	6	Reg #2
7	Reg #3	8	Reg #4
9	Reg #5	10	Reg #5
11	Copier	12	Kiddie Ride
13	Muzak Rec. CBT wall	14	Outdoor Rec
15	AHU #4 Controls	16	Outdoor Rec
17	Spare	18	Outdoor Rec
19	Spare	20	Outdoor Rec
21	Bookkeeping Rec.	22	Spare
23	Outdoor Rec.	24	Spare
25	Customer service Rec.	26	24 HR Sign
27	Customer service Rec.	28	
29	Customer service Rec.	30	Cum Machine
31	Outdoor Rec.	32	Spare
33	Outdoor Rec.	34	Office
35	Outdoor Rec.	36	Spare
37	AHV #4	38	POS RM REC.
39	AHV #4	40	POS RM REC.





Open

Post 62 - Panel G Data: Schedule Incorrect



Ryan Lasker - Crescent Construction Services

8/16/2019, 1:57 PM EDT

To: Assignees, Crescent Construction Services

Location

Mechanical Room

Assigned To



Electrical Contractor

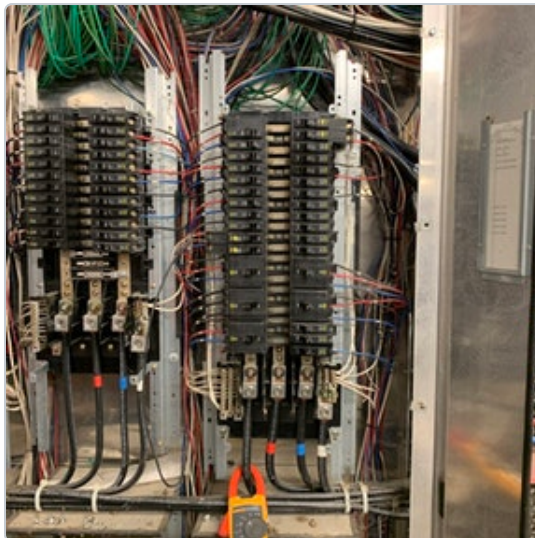
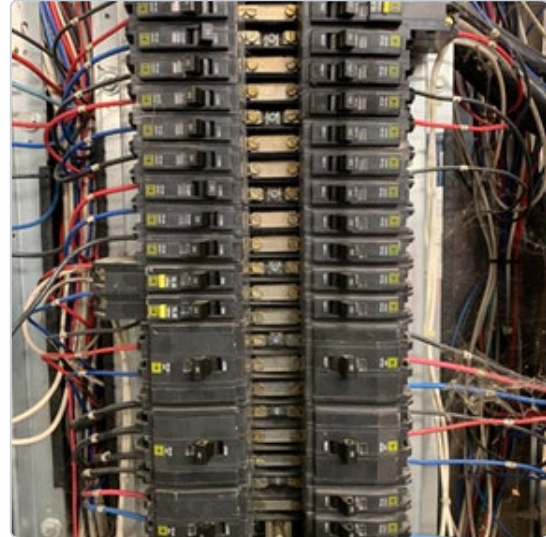
No due date

Open

All Media

4 photos

Phase Leads	A Phase	B	B Phase	C	C Phase	D	Neutral	E
Circuit	Pole	AWG	Amp		Amp	AWG	Pole	Circuit
1	2	12	20		20	12	1	2
3	2	12	20		20	12	1	4
5	1	12	20		30	Spare	1	6
7	1	12	20		20	12	1	8
9	1	12	20		20	12	1	10
11	1	12	20		20	Spare	1	12
13	1	12	20		20	12	1	14
15	1	12	20		20	Spare	1	16
17	1	12	20		20	Spare	1	18
19	1	12	20		20	Spare	1	20
21	1	12	20		20	Spare	1	22
23	1	12	20		20	Spare	1	24
25	3	12	20		30	10	3	26
27	3	12	20		30	10	3	28
29	3	12	20		30	10	3	30
31	3	8	40		20	12	3	32
33	3	8	40		20	12	3	34
35	3	8	40		20	12	3	36
37	3	10	30		20	Spare	1	38
39	3	10	30		20	Spare	1	40
41	3	10	30		20	12	1	42



[Open](#)**Post 37 - Panel H Data: Schedule Incorrect****Mason Perkins - Crescent Construction Services**

8/16/2019, 1:57 PM EDT

To: Assignees, Crescent Construction Services

Location

Mechanical Room

Assigned To

**Electrical Contractor**

No due date

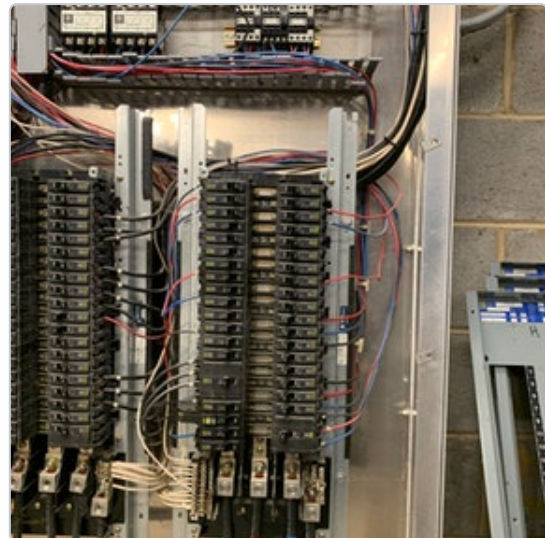
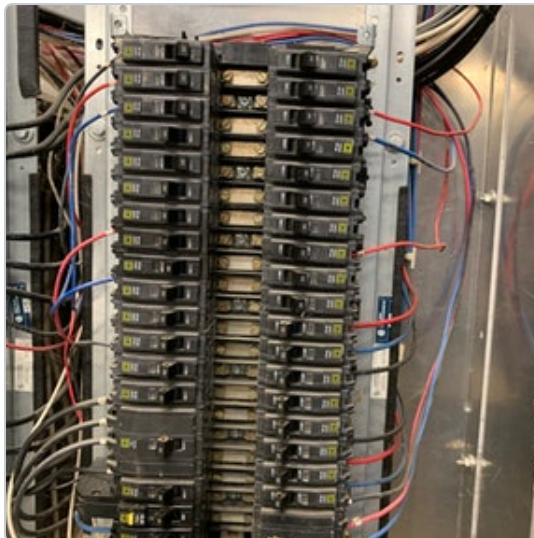
[Open](#)

All Media

4 photos

Phase Loads	A Phase	B Phase	C Phase	Neutral	Circuit
Circuit	Pole	AMP	AMP	Pole	Circuit
1	1	12	20	20	1
3	1	12	20	20	12
5	1	12	20	20	10
7	1	Spare	20	20	Spare
9	1	Spare	20	20	Spare
11	1	Spare	20	20	Spare
13	1	Spare	20	20	Spare
15	1	12	20	20	12
17	1	Spare	20	20	Spare
19	1	12	20	20	Spare
21	1	Spare	20	20	10
23	1	Spare	20	20	10
25	1	12	20	20	10
27	1	Spare	20	20	Spare
29	3	8	50	20	Spare
31	3	8	50	20	10
33	3	8	50	20	10
35	1	12	20	20	10
37	1	Spare	20	30	10
39	1	Spare	20	30	10
41	1	10	20	30	10

Ckt #	Load Description
1	RECEPT-STOCK AREA
3	RECEPT-STOCK AREA
5	RECEPT-FR MACHINE ROOM
7	RECEPT-PHARMACY
9	RECEPT-PHARMACY
11	RECEPT-PHARMACY
13	REC. BLOOD PRESS MACH REF
15	DOOR BELLS
17	SPARE
19	ELECTRIC HOIST
21	SPARE
23	SPARE
25	R SEAFOOD FREEZER
27	SPARE
29	FLASHBAKE OVEN
31	SPARE
33	SPARE
35	SPARE
37	RECEPT-SEAFOOD
39	SPARE
41	ATM SIGN
43	SPARE
45	SPARE
47	SPARE
49	PROD. PREP ICE MACH
51	SPARE
53	SPARE
55	SPARE
57	SPARE
59	SPARE
61	FRONT CANOPY LIGHTS
63	FRONT CANOPY LIGHTS
65	FRONT CANOPY LIGHTS
67	SPARE
69	SPARE
71	FRONT CANOPY LIGHTS



Open

Post 63 - Panel J Data: Schedule Incorrect



Ryan Lasker - Crescent Construction Services

8/16/2019, 1:56 PM EDT

To: Assignees, Crescent Construction Services

Location Mechanical Room

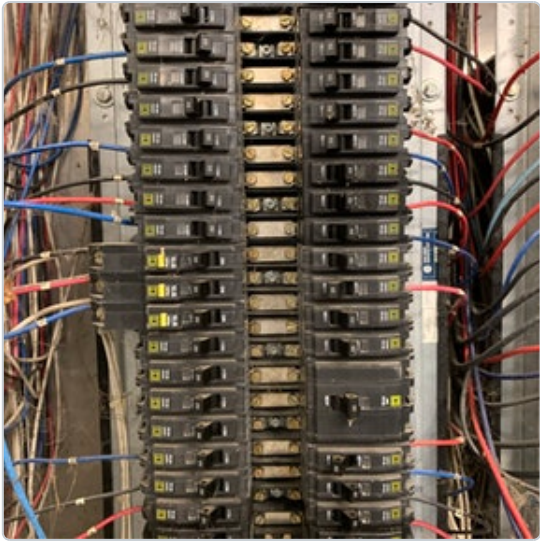
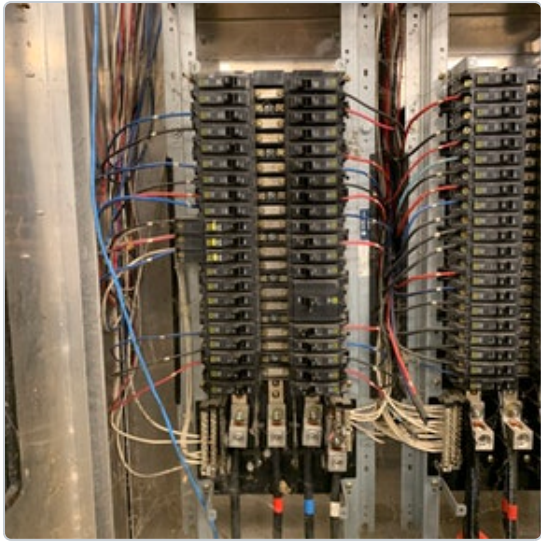
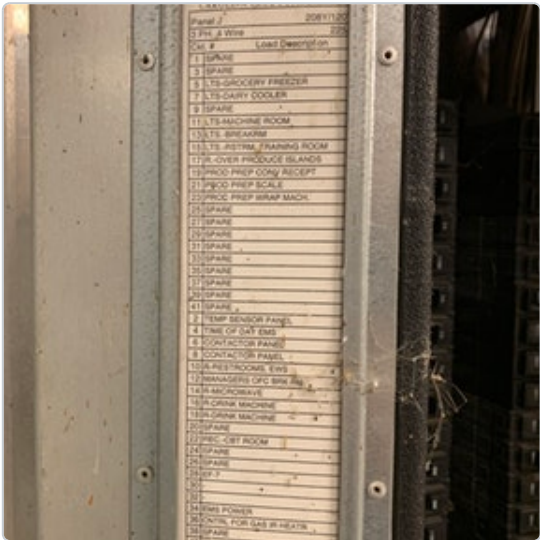
Assigned To Electrical Contractor

No due date

Open

All Media 4 photos

PANEL - J								
Phase Loads	A Phase	4	B Phase	3	C Phase	13	Neutral	9
Circuit	Pole	AWG	Amp		Amp	AWG	Pole	Circuit
1	1	Spare	20		20	12	1	2
3	1	Spare	20		20	12	1	4
5	1	10	20		20	Spare	1	6
7	1	10	20		20	Spare	1	8
9	1	Spare	20		20	12	1	10
11	1	12	20		20	12	1	12
13	1	12	20		20	12	1	14
15	1	12	20		20	12	1	16
17	1	10	20		20	12	1	18
19	1	10	20		20	Spare	1	20
21	1	10	20		20	10	1	22
23	1	10	20		20	Spare	1	24
25	1	Spare	20		20	Spare	1	26
27	1	Spare	20		20	Spare	3	28
29	1	Spare	20		20	Spare	3	30
31	1	Spare	20		20	Spare	3	32
33	1	Spare	20		20	Spare	1	34
35	1	12	20		20	12	1	36
37	1	12	20		20	12	1	38
39	1	12	20		20	12	1	40
41	1	Spare	20		20	12	1	42



Open

Post 28 - Panel PL Data: Schedule Incorrect



Ryan Lasker - Crescent Construction Services

8/16/2019, 1:56 PM EDT

To: Assignees, Crescent Construction Services

Location Office

Assigned To



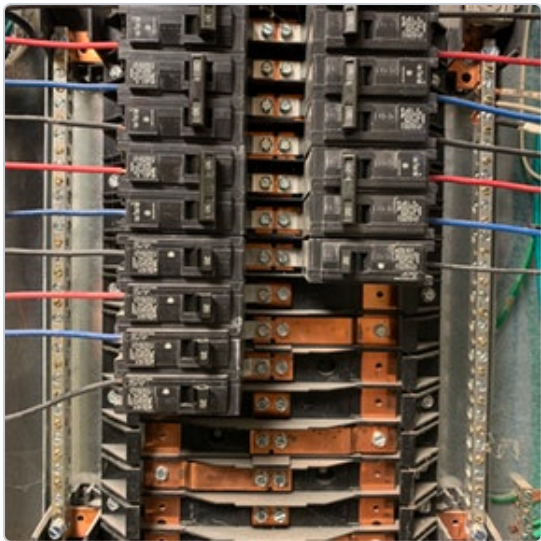
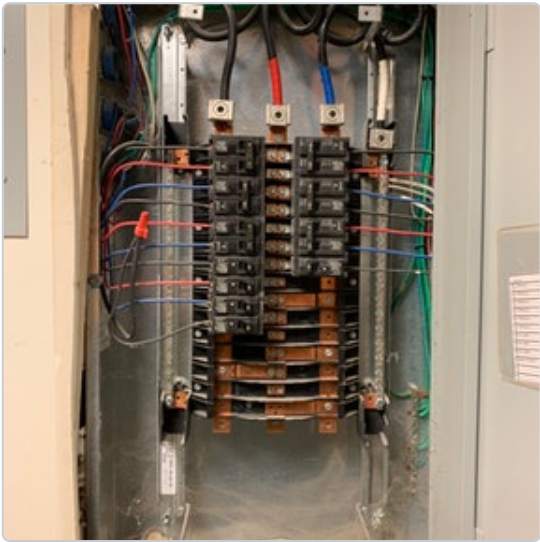
Electrical Contractor

No due date

Open

All Media 4 photos

PANEL - PL								
Phase Loads	A Phase	30	B Phase	30	C Phase	30	Neutral	3
Circuit	Pole	AMP	Amp		Amp	AMP	Pole	Circuit
1	2	10	30		30	10	2	2
3	2	10	30		30	10	2	4
5	2	10	30		30	10	2	6
7	2	10	30		30	10	2	8
9	2	10	30		20	10	2	10
11	2	10	30		20	10	2	12
13	1	10	20		20	12	1	14
15	1	10	20				Blank	16
17	1	10	20				Blank	18
19	1	10	20				Blank	20
21	Blank						Blank	22
23	Blank						Blank	24
25	Blank						Blank	26
27	Blank						Blank	28
29	Blank						Blank	30



CIRCUIT DIRECTORY	
Panel PL	
1 L. Parking Lot	2 L. Parking Lot
3 L. Parking Lot	4 L. Parking Lot
5 L. Parking Lot	6 L. Parking Lot
7 L. Parking Lot	8 L. Parking Lot
9 L. Parking Lot	10 L. Parking Lot
11 L. Parking Lot	12 L. Parking Lot
13 Pylon Lights	14 Lighting Controller
16 Pylon Lights	18 Space
17 Pylon Lights	18 Space
19 Irrigation Controls	20 Space
21	22 Space
23	24 Space

 **Open****Post 77 - Panel POS Data: Schedule Incorrect****Dave Beretsky - Crescent Construction Services**

8/16/2019, 1:56 PM EDT

To: Assignees, Crescent Construction Services

Isolated and standard ground bar in use. Both have a dedicated ground conductor.
Store does not utilize a UPS. Registers fed via telepoles.

Location  **Office**Assigned To  **Electrical Contractor**

No due date

OpenAll Media  **4 photos**

PANEL - POS								
Phase Loads	A Phase		B Phase		C Phase		Neutral	
Circuit	Pole	AMP	Amp		Amp	AMP	Pole	Circuit
1	1	12	20		20	12	1	2
3	1	Spare	20		20	Spare	1	4
5	1	10	20		20	10	1	6
7	1	10	20		20	10	1	8
9	1	10	20		20	10	1	10
11	1	12	20		20	12	1	12
13	1	12	20		20	10	1	14
15	1	12	20		20	12	1	16
17	1	12	20		20	12	1	18
19	1	12	20		20	12	1	20
21	1	10	20		20	10	1	22
23	1	10	20		20	10	1	24
25	1	12	20		20	10	1	26
27	1	12	20		20	Spare	1	28
29	1	12	20		20	Spare	1	30
31	1	12	20		20	12	1	32
33	1	12	20		20	12	1	34
35	1	12	20		20	Spare	1	36
37	Blank						Blank	38
39	Blank						Blank	40
41	Blank						Blank	42

